

RAHEJA INTERFACE HEIGHTS

MALAD WEST



THE RAHEJA LEGACY

– *A Towering Heritage* –

A HOME BUILT ON TRUST, CRAFTED WITH EXCELLENCE

For over 68 years, K Raheja Realty has redefined cityscapes with landmark developments that don't just stand tall but stand apart. Our commitment to excellence, thoughtful design, and impeccable craftsmanship ensures that every home we create is a reflection of dreams fulfilled.

At Raheja Interface Heights, we invite you to step into a world where **luxury meets warmth**, where modern living is infused with a sense of belonging. And now, with the unveiling of Premium Tower 'G', a rare opportunity awaits to claim your place in this exceptional community.

RAHEJA INTERFACE HEIGHTS

MALAD WEST

INTERFACE HEIGHTS - G



Actual picture shot at site.

PROJECT OVERVIEW

– *A Vision Of Elevated Living* –



WHERE EVERY DETAIL SPEAKS OF HOME

Nestled in Malad West, **Raheja Interface Heights** is more than just a residential complex—it's a thoughtfully designed haven where every detail enhances your way of life.



Actual picture shot at site.



A vibrant gated community, designed for modern families



Architectural brilliance with warm, inviting interiors



A seamless blend of privacy, space, and connectivity



Ready to move in residences, perfected for comfortable living

Here, home is not just where you live
—it's where you truly belong.

READY-POSSESSION LUXURY HOMES

— *Designed For The Discerning* —



Actual Sample Flat Picture.

The Premium Tower 'G' at Raheja Interface Heights offers beautifully crafted, ready to move homes designed to bring comfort, elegance, and tranquility into every day.

STEP IN AND FEEL AT HOME



BREATHTAKING VIEWS

Wake up to serene podium gardens or uninterrupted vistas of lush mangroves.



THOUGHTFUL LAYOUTS

Spaces designed to maximize light, air, and movement, ensuring your home feels open and refreshing.



A SMARTER INVESTMENT

With OC received and no GST applicable, enjoy significant savings and immediate possession.



EXQUISITE CRAFTSMANSHIP

Every finish, fixture, and fitting speaks of quality and care.



A THRIVING COMMUNITY

A well-established neighborhood with world-class amenities at your doorstep.

This isn't just a place to live—it's a place to grow, to unwind, and to make memories that last a lifetime.

PREMIUM TOWER 'G'

– A Crowning Jewel –

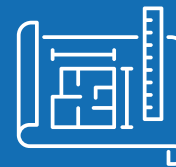


A RARE OPPORTUNITY TO OWN A MASTERPIECE

A vision in contemporary design, Premium Tower 'G' at Raheja Interface Heights is an address like no other —where every detail exudes sophistication and comfort.



**BREATHTAKING
CITYSCAPE AND
LUSH GREEN VIEWS**



**SPACIOUS RESIDENCES
DESIGNED FOR
HARMONIOUS LIVING**



**A SEAMLESS BALANCE OF
ELEGANCE, PRACTICALITY,
AND WARMTH**



**A WELL-INTEGRATED PART
OF AN ESTABLISHED,
VIBRANT COMMUNITY**

DISCOVER 2 & 3* BHK HOMES AT RAHEJA INTERFACE HEIGHTS

*Available at Interface Heights

**A home here is more than a residence
- it's the sanctuary you've always envisioned.**

EXCLUSIVE GATED COMMUNITY

– *A Sanctuary Of Tranquility* –



Images are for illustration purpose only.

A HOME THAT EMBRACES YOU WITH OPEN ARMS

Beyond your front door lies a community designed to nurture, protect, and inspire.



A Grand Entrance Lobby with round-the-clock security and controlled access



Expansive podium gardens—a green escape within the city

Experience a lifestyle where home extends beyond four walls and into a thriving, close-knit environment.

WORLD-CLASS AMENITIES

– *Indulgence Redefined* –



SPACES THAT
ENRICH EVERY MOMENT

SWIMMING POOL

A Place to Unwind

Whether you seek a morning swim or an evening of relaxation, this stunning pool offers a tranquil retreat.



Actual picture shot at site.

GYMNASIUM

Wellness, Just Steps Away

State-of-the-art equipment in an inviting space, making every workout feel effortless.



Actual picture shot at site.



CLUBHOUSE

The Heart of the Community

A thoughtfully curated space for gatherings, celebrations, and leisure, designed to bring people together.

Actual picture shot at site.

SQUASH COURT

Stay Active, Stay Energized

An exclusive indoor sports facility where fitness meets recreation.



Actual picture shot at site.

RESTAURANT

A Culinary Experience at Home

Savor delicious meals just steps from your home, in a setting designed for indulgence and togetherness.



Actual picture shot at site.

INDOOR PLAY AREA

Joy for Every Child

A lively space filled with laughter, creativity, and endless playtime for the little ones.

Actual picture shot at site.

AMPLE PARKING

Designed for Modern Living

Seamless parking solutions for
a hassle-free urban lifestyle.



Image is for illustration purpose only.

PODIUM GARDEN

A Breath of Fresh Air

Lush landscapes, quiet corners, and open skies — a perfect place to unwind or connect with neighbors.



Actual picture shot at site.



MULTI-PURPOSE ROOM

For Endless Possibilities

A versatile space that can be used for various activities - whether you need a quiet spot to meditate or practise yoga, among other purposes.

Image is for illustration purpose only.

LOCATION & CONNECTIVITY

— *Where Prestige Meets Convenience* —

PERFECTLY POSITIONED IN
MALAD WEST, RAHEJA INTERFACE
HEIGHTS ENSURES THAT YOUR
WORLD IS ALWAYS WITHIN REACH.

RETAIL & COMMERCIAL HUBS

- Infiniti Mall (500 m)
- Interface IT Park (500 m)
- Mindspace (1 Km)
- D Mart (850 m)

COLLEGES

- KG Mittal College (1.5 Kms)
- Vidya Vikas Universal College (1.8 Kms)
- Dalmia College (2.4 Kms)
- Ghanshyamdas Saraf College (2.4 Kms)
- Atharva College (3 Kms)

SCHOOLS

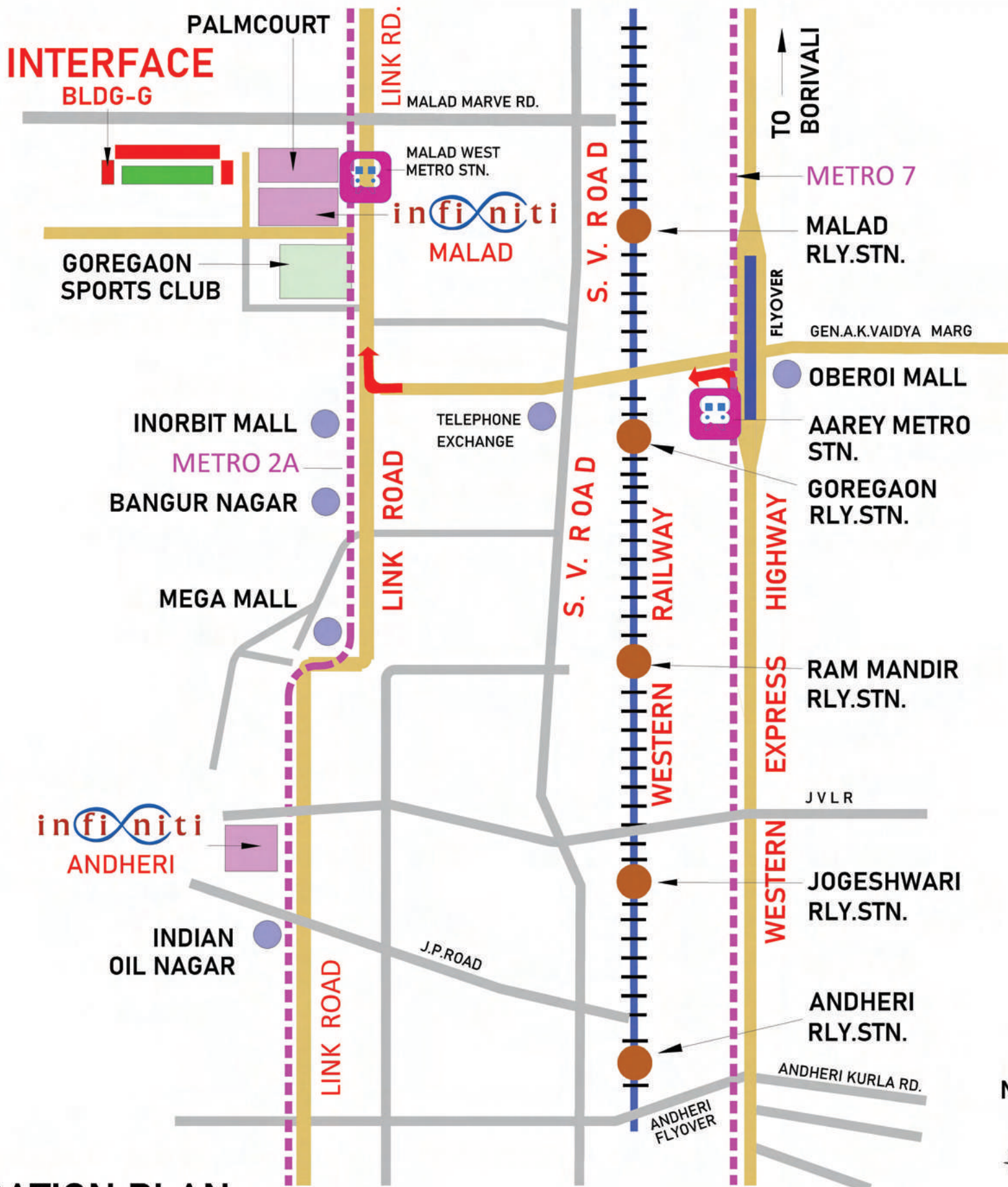
- Shri Balaji International School (1.9 Kms)
- Ryan International School (2.3 Kms)
- Orchid International School (2.6 Kms)
- Witty International School (2.6 Kms)
- Billabong High International School (3.8 Kms)

HEALTHCARE EXCELLENCE

- Zenith Hospital (1.9 Kms)
- Lifeline Multispeciality Hospital (3 Kms)
- Surana Hospital And Research Centre (3 Kms)
- Thunga Hospital (3.1 Kms)
- Kapadia Multispeciality Hospital (4.2 Kms)

SEAMLESS ACCESS

- Western Express Highway (5.2 Kms)
- Metro (850 m)
- Railway (2.6 Kms)



LOCATION PLAN

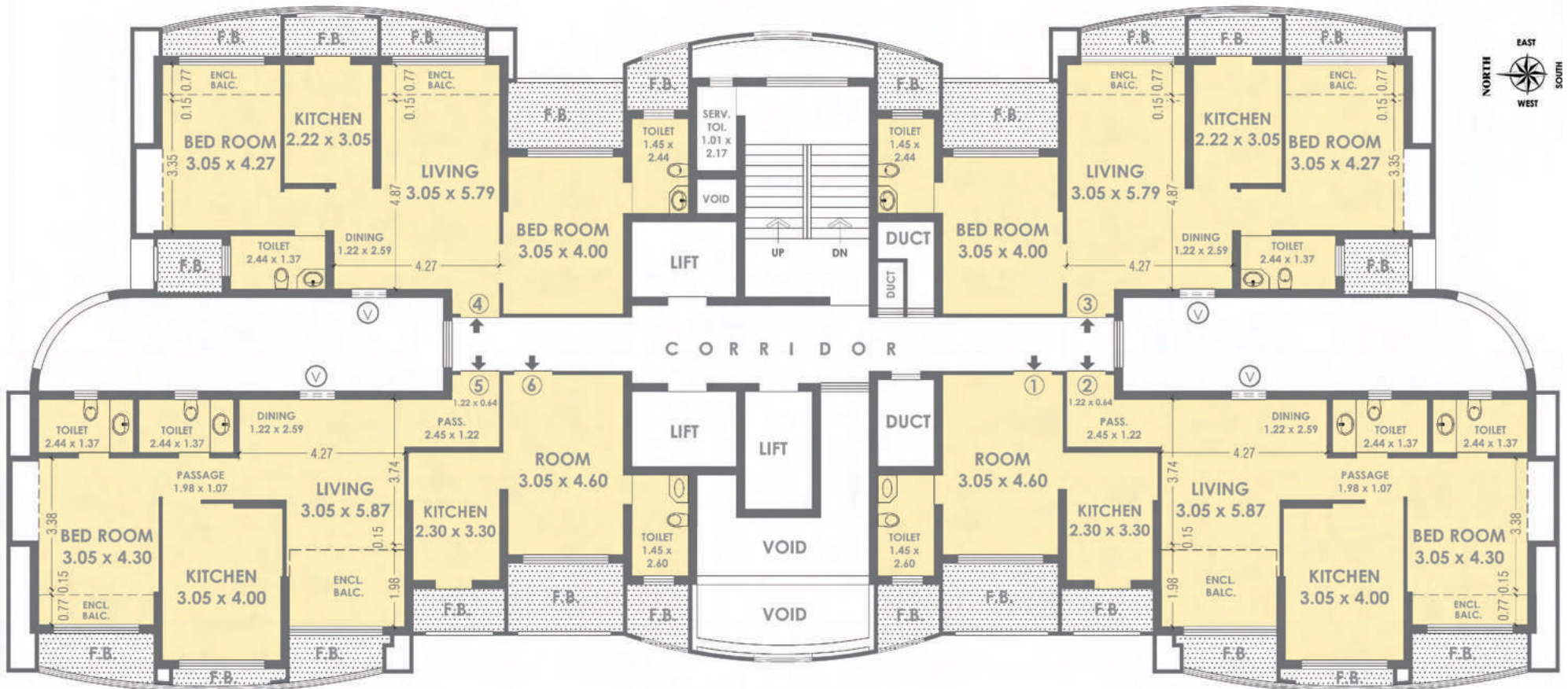
FLOOR PLAN

– *Intelligent Design, Inspired Spaces* –



**EVERY INCH IS DESIGNED
TO ELEVATE COMFORT,
FUNCTIONALITY, AND BEAUTY.**

FLOOR PLAN



INTERFACE HEIGHTS
BUILDING - G

TYPICAL FLOOR PLAN
(4th TO 7th, 9th TO 11th, 12th TO 15th, 17th TO 20th FLR)

NOTE:
DIMENSIONS SHOWN FROM WALL TO WALL
EXCLUDING COLUMN PROJECTION

YOUR KEY TO AN EXTRAORDINARY LIFE

- Where Your Story Begins -



Images are for illustration purpose only.

BOOK YOUR DREAM HOME TODAY



9321035598



Raheja Interface Heights 'F', Ground Floor,
Off New Link Road, Behind Infiniti Mall, Malad (W). Mumbai 400 064.



SCAN TO VISIT
WEBSITE

Head Office: K RAHEJA REALTY, Construction House 'B', 2nd flr, 623,
Linking Road, opp. Khar Telephone Exchange, Khar West,
Mumbai, Maharashtra 400052. Phone: 022 61313131.

sales@krahejarealty.com | www.facebook.com/krahejarealty
www.instagram.com/krahejarealty | www.krahejarealty.com

